

ERS STOCK INFORMATION SHEET

Keep track of your inventory with ERSStock.

Designed for small businesses this simple-to-use and intuitive system includes PC database and reporting software and portable data collection terminal, and allows you to quickly and accurately track stock without the costs associated with more complex systems.

Use ERSStock to efficiently book Stock IN and OUT via the portable terminal, speed up and improve accuracy of Stocktakes, print barcoded product labels and check that the correct barcode labels are fixed to your products.

ERSStock is affordable, easy and fast to implement and accurate.

PRODUCTS DATABASE

The system incorporates a master products database including the following data items for each product:

- Product Code + Secondary Product Code
- Product Description + Short Description
- Buy price + Sales Price
- Supplier Code + Product Group
- 4 User configurable fields
- Min Stock Level for re-order
- Quantity

IMPORT STOCK

Freely add or edit stock via the PC keyboard or import existing products via text file if required.

PORTABLE TERMINALS

Use the terminal to Book Stock IN and OUT, automatically updating relevant stock levels in the central database and maintaining a history of every individual transaction.

Entering a Transaction Reference No. when booking Stock IN or OUT allows subsequent reporting of goods received against a specific delivery, or product shipped against a specific customer order no, or to a specific customer for example.

Perform a full or partial stocktake with the terminal, and generate reports of results and variances in moments.

The terminal may also be used in 'Validate mode' to verify that the correct barcode labels have been applied to products.

REPORTS

A wide range of standard reports are included.

Stock based reports may be run against the products database to determine current stock levels and value, products below re-order level etc. Stock reports may be run for a specific Product Group or Supplier Group or for an individual Product Code, for example.

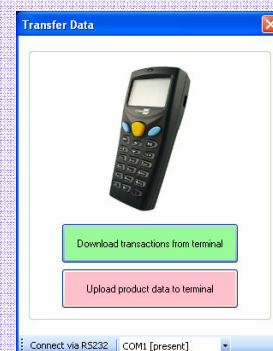
Transaction based reports may be run to list products received or despatched against a specific Purchase Order or Sales Order, for example or for a given date range etc.

A range of Stocktake reports allows instant reporting of stocktake results and variances etc.

BARCODE LABELS Print barcoded stock labels from the ERSStock database using GK420 label printer



Type	Reference	Operator	Quantity	Date
OUT	ERS0251	121212	20	14/07/2010 16:52:07
OUT	GS0101	121212	100	14/07/2010 16:51:32
IN	10081	10085	130	14/07/2010 16:50:49
OUT	ACS123	10001	5	14/07/2010 16:50:18
IN	234473	10001	17	14/07/2010 16:49:28
IN	1221	10001	25	14/07/2010 16:49:16
IN	24795	10001	5	12/07/2010 17:48:14
IN	24795	10001	99	12/07/2010 17:47:59



SPECIFICATIONS

Operating System:

Windows XP or above with .NET2.0 framework

Interfaces Required:

USB for CPT8001 portable terminal
USB for Barcode label printer

Database:

Compact SQL

Data Import:

Flexible text file data import

Stock Functions Supported:

Booking of Goods IN and OUT
Stocktake
Barcode label Validation
Automatic adjustment of stock levels from Goods IN/ OUT transactions

Reports:

Stock levels, details and value
Low stock (Products below re-order level)
Stock Transaction reports
Stocktake results and variances

Wide range of report selection criteria enables reporting for specified Product or Product Group, specified Supplier Group or Transaction Reference (eg: Purchase Order, Sales Order, Customer Account etc.) or selected by any of the user specified data fields etc.

Barcode Label Printing:

via GK420 desktop thermal label printer

Portable Terminal:

CPT8001 Compact barcode data collection terminal pre-loaded with ERSSStock application.

Bespoke functionality and reports subject to specification